



SIGNAL S600 VL SERIES MIXERS

by Milton Roy

TYPE VLA

- Open tanks from 0,5 to 5 m³
- Atmospheric pressure
- Temperature up to 70°C

General characteristics

- Agitator with direct drive
- Lantern with radial bearing
- Lower shaft provided with a marine impeller
- Rated power from 0,37 to 1,5 kW

Capacities

- From 0.5 to 5 m³ approximately

Operating conditions

- Atmospheric pressure
- Temperature up to 70°C

Main applications

- Homogenization
- Dissolution
- Preparation of reagents
- Neutralization

Construction materials

- Stainless steel 316L
- Painting PU : RAL 1018 on the drive system
(please consult us for any other material)

Electric characteristics

- 230/400 V three-phase
- 50 Hz
- IP 55
(please consult us for any other voltage and frequency)

Options (depending on mixer type)

- Special motors
- Halar coating
- Second impeller
- Grip fixing
- Lip seal device

Operational limits

- Operation prohibited during draining
- Not recommended for products sensitive to shearing
- Maximum viscosity of 500mPas
- Density < = 1,2

SIGNAL S600 VL SERIES MIXERS by Milton Roy

Open tanks from 0.5 to 5 m³ – Atmospheric pressure – Temperature up to 70°C

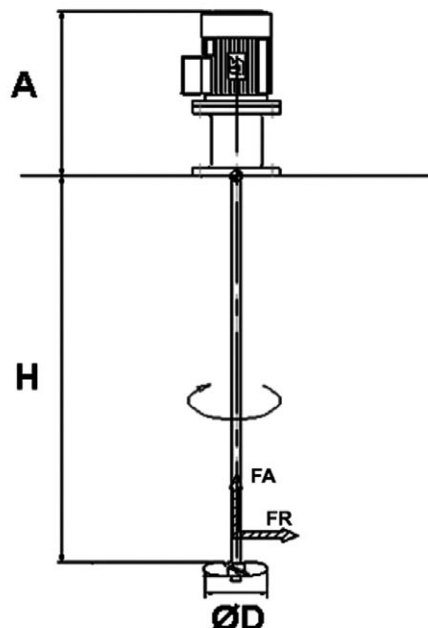
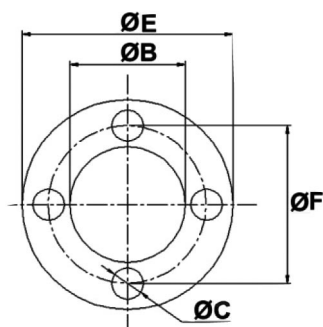
TYPE VLA SPECIFICATIONS

Type	Rated Power (kW)	Rotation Speed (rpm)	Maximum Height (mm) H	Propeller Diameter (mm) D	Propeller Flowrate (m ³ /h)	Weight (kg)	Axial Load (DaN)	Torque (DaNm)
2730	0.37	1000	1500	128	69	20	4.5	0.4
2530S	0.75	1500	1500	128	104	20	5.6	0.5
3530S	0.75	1500	1500	140	136	20	7.3	0.5
4630S	1.5	1500	1500	160	203	27	15	1
5630S	1.5	1500	1500	200	396	27	28	1

The minimum height of the liquid at the top of the impeller is 300 mm.
It is necessary to respect a distance of 150 mm between the flange and the level of the liquid.

TYPE VLA DIMENSIONS (MM)

Type	A	B	C	E	F
2430S	388	-	12	200	165
2530S	388	-	12	200	165
3530S	388	-	12	200	165
4630S	425	-	12	200	165
5630S	425	-	12	200	165



Signal
METERING PUMPS

Signal Metering Pumps

Gee House, Holborn Hill

Birmingham B7 5JR

Tel: 0121 326 1745

Fax: 0121 326 1779

Email: info@signal-pumps.co.uk

Web: www.signal-pumps.co.uk

Please consult us for further information.

A division of GEE & Co